

# Water

chri d. d.

3/16/2003

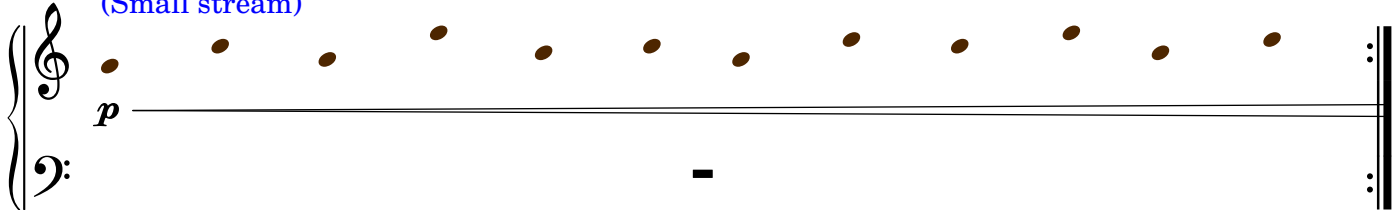
**Black/brown** noteheads: Noteheads indicate approximate rhythms and direction of pitches. If the noteheads go up, the notes should go up; if they go down, the notes should go down.

**Gray/blue** noteheads: Follow the instructions. The noteheads are just an example of one interpretation of the instructions.

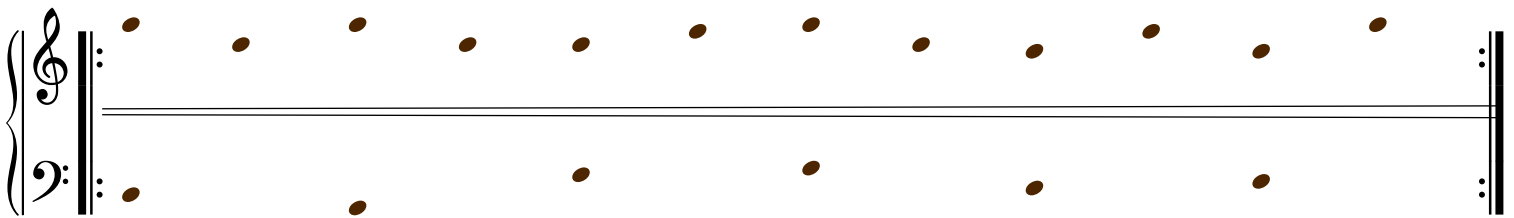
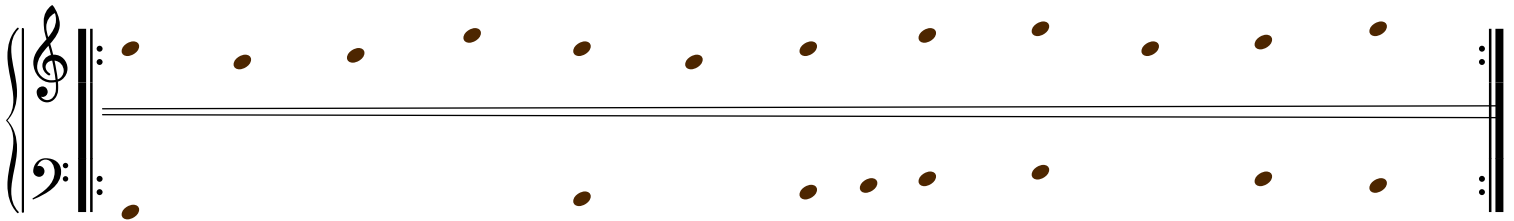
Vary notes and rhythms, but follow the noteheads. Repeat each line any number of times.

An optional rainstick may accompany the beginning (piano should start shortly before rainstick finishes if used). Use only white keys on piano except where indicated otherwise.

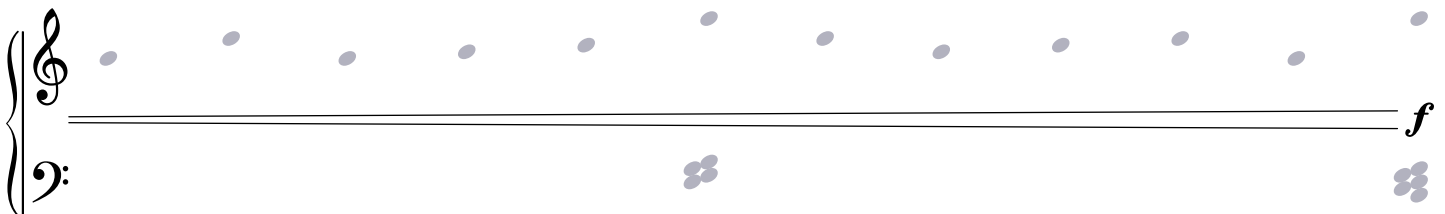
(Small stream)



Ped. ad lib



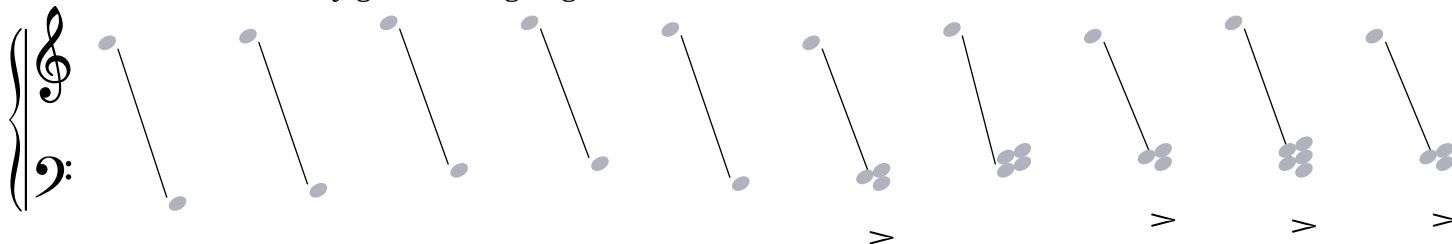
Random wavy pattern in the treble clef. Not necessary to follow noteheads here. (Stream going over rocks)



When R.H. plays higher notes, play clusters >

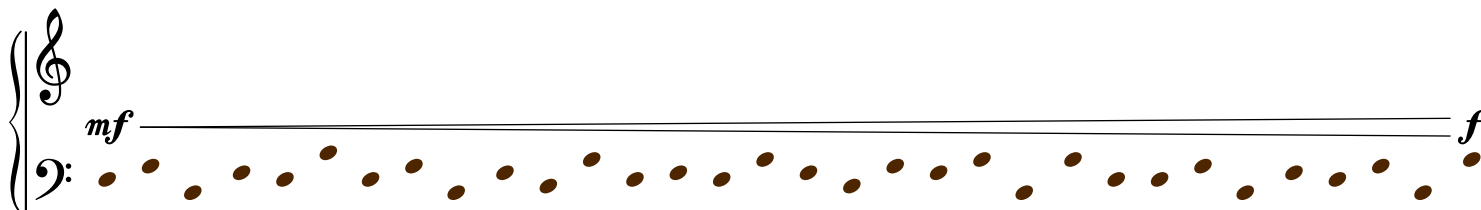
>

Random black-key glissandos going down (Waterfall)

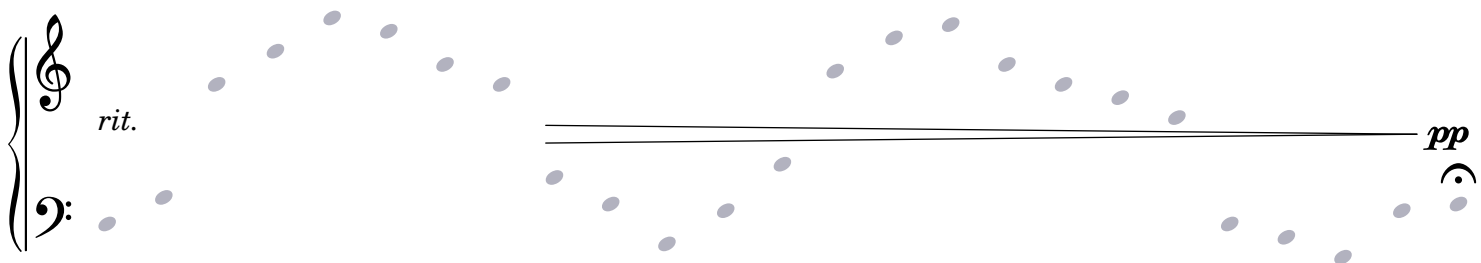


Now start playing clusters at the bottom

Return to first instructions. Stop ignoring the notes now. *accel.* (Fast river)



Play random wavy pattern using the whole piano (ignore noteheads again). (Ocean)



Play a fourth:

if the previous note is high, the fourth is low

if the previous note is low, the fourth is high

(Sunset)